



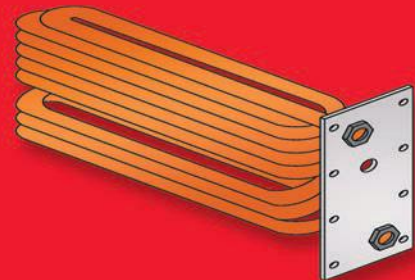
KINGSTON

Oil-Fired Steam Boiler

Designed for reliability, high efficiency and performance for residences with chimneys

DOMESTIC HOT WATER OPTION

The Kingston's optional tankless coil feature eliminates the need for a separate water heater, making it ideal for installation in small spaces.

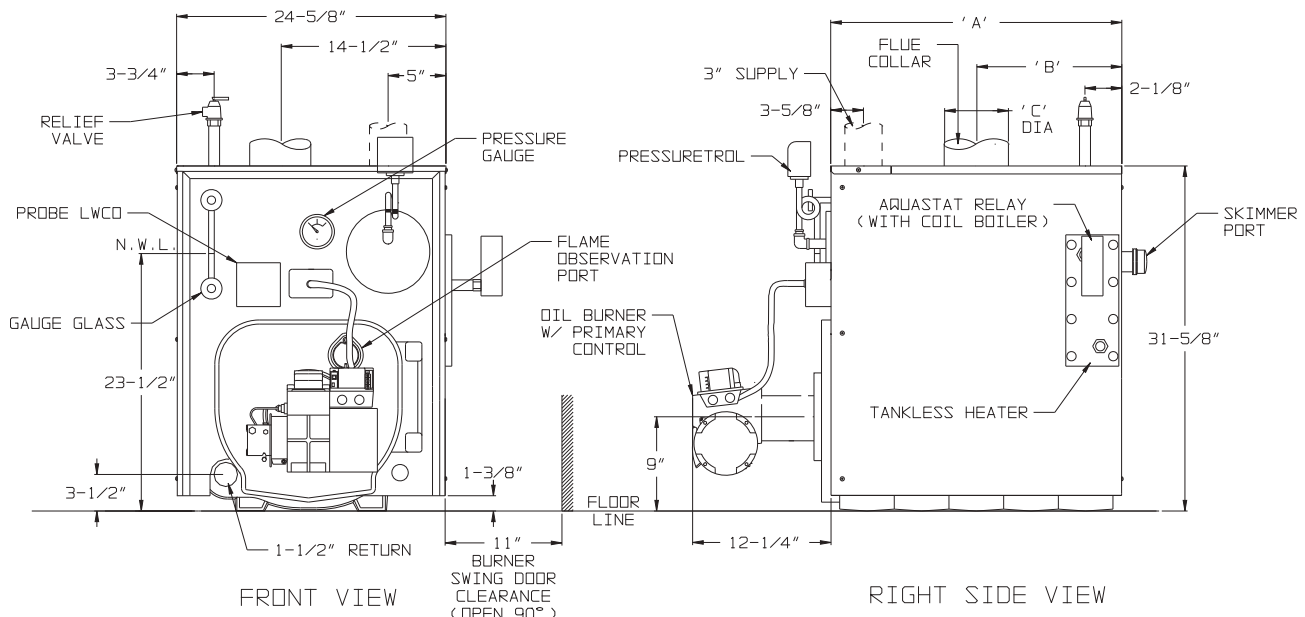


- Efficiencies up to 86.4%
- Rugged wet base, cast iron heat exchanger
- Cast iron swing door with burner disconnect for easy service
- Optional side-mounted tankless coil for domestic hot water production
- Beckett AFG burner standard: Carlin and Riello burners optional on most sizes
- Near boiler piping kit available separately for ease of installation

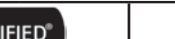
See backside for technical specifications

Quality
Value &
Service

KSB SERIES - KINGSTON TECHNICAL SPECIFICATIONS



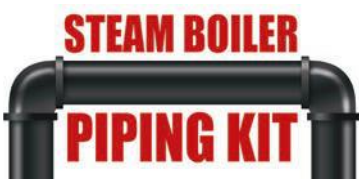
- Notes:
1. Dashed piping shown not furnished with boiler.
 2. Tankless heater opening not present on less tankless heater boilers.

KSB SPACE HEATING RATINGS							NO. OF SECS.	TANKLESS HEATER	DIMENSIONS			SHIPPING WEIGHT
CROWN MODEL NUMBER	BURNER INPUT	HEATING CAPACITY	AHRI NET RATING STEAM		AFUE (%)				"A"	"B"	"C"	
			(GAL/HR)	(MBH)								
KSB065	0.65	79	246	59	85.1	3	2.25	17-3/8	8-15/16	6	570	
KSB075	0.75	91	283	68	85.7	3	2.25	17-3/8	8-15/16	6	570	
KSB100	1.00	121	379	91	85.0	3	2.50	17-3/8	8-15/16	6	570	
KSB125	1.20	147	458	110	86.4	4	2.75	22-3/8	10-13/16	7	690	
KSB150	1.50	181	567	136	85.1	4	3.00	22-3/8	10-13/16	7	690	
KSB175	1.75	212	663	159	85.6	5	3.25	27-3/8	13-5/16	8	810	
KSB200	1.90	230	721	173	85.3	5	3.50	27-3/8	13-5/16	8	810	

- Notes:
1. Net Ratings are based on piping and pick-up allowances of 1.333. The manufacturer should be consulted before selecting a boiler for installations having unusual piping and pickup requirements, such as intermittent system operation, extensive piping systems, etc.
 2. Burner Capacity Rating, GPH is based on #2 oil with a Gross Heating Value equal to 140000 BTU/Gal.
 3. Tankless heater ratings based on 40F inlet water, 140F outlet water, and 190F boiler water. Ratings are also based on 5 minute intermittent draws with 10 minutes between draws.

All residential cast iron steam boilers include a full one year warranty. A limited, 12-year warranty is provided for the cast iron heat exchanger. 5-year and 10-year extended warranties covering parts and labor are also available. Visit VelocityBoilerWorks.com for complete details.

OPTIONAL EQUIPMENT:



The Kingston KSB Series boiler is compatible with our Steam Boiler Piping Kit, a more convenient way to pipe steam boilers. For more information on the Steam Boiler Piping Kit, visit VelocityBoilerWorks.com.

ADDITIONAL FEATURES/BENEFITS

- Hydrolevel CG450 probe low water cut off
- Attractive split jacket easily removed for servicing
- Three physical sizes with seven firing rates
- Burners packaged separately for easier handling



Specifications are subject to change without notice.

VelocityBoilerWorks.com | Philadelphia PA

KSB - 02/21
PN 980616